



City of El Lago
Demographic and Income Profile

Prepared for:
Bay Area Commercial Real Estate Network (BACREN)

Prepared by:
Colin Fox, CCIM
Colin Fox & Associates, LLC

281.333.4692
colinfox@colinfox.com
www.colinfox.com

The information contained herein is from sources believed reliable, but neither Colin Fox & Associates, LLC including the author of this report, have confirmed this information. Any warranty or representation of accuracy is expressly disclaimed. The Recipient of this report is cautioned that it is the Recipient's responsibility to confirm the accuracy and completeness of the information provided, including such independent investigation of this information as may appear necessary to determine its suitability for Recipient's needs.



Demographic and Income Profile

Report prepared by Colin Fox & Associates

Places: El Lago city, TX

Summary	2000	2007	2012
Population	3,075	3,503	3,805
Households	1,303	1,454	1,560
Families	870	808	859
Average Household Size	2.35	2.41	2.44
Owner Occupied HUs	959	811	889
Renter Occupied HUs	344	642	672
Median Age	40.6	39.4	40.4

Trends: 2007-2012 Annual Rate	Area	National
Population	1.67%	1.22%
Households	1.42%	1.27%
Families	1.23%	1.00%
Owner HHs	1.85%	1.29%
Median Household Income	3.78%	3.29%

Households by Income	2000		2007		2012	
	Number	Percent	Number	Percent	Number	Percent
< \$15,000	56	4.1%	72	5.0%	63	4.0%
\$15,000 - \$24,999	31	2.3%	54	3.7%	41	2.6%
\$25,000 - \$34,999	99	7.2%	105	7.2%	68	4.4%
\$35,000 - \$49,999	249	18.1%	155	10.7%	135	8.7%
\$50,000 - \$74,999	319	23.3%	345	23.7%	318	20.4%
\$75,000 - \$99,999	233	17.0%	188	12.9%	235	15.1%
\$100,000 - \$149,999	324	23.6%	299	20.6%	320	20.5%
\$150,000 - \$199,000	19	1.4%	151	10.4%	181	11.6%
\$200,000+	42	3.1%	85	5.8%	199	12.8%
Median Household Income	\$68,674		\$74,584		\$89,803	
Average Household Income	\$78,045		\$97,393		\$118,599	
Per Capita Income	\$33,454		\$42,546		\$50,960	

Population by Age	2000		2007		2012	
	Number	Percent	Number	Percent	Number	Percent
0 - 4	158	5.1%	185	5.3%	199	5.2%
5 - 9	205	6.7%	183	5.2%	192	5.0%
10 - 14	208	6.8%	251	7.2%	208	5.5%
15 - 19	165	5.4%	241	6.9%	263	6.9%
20 - 24	126	4.1%	193	5.5%	347	9.1%
25 - 34	357	11.6%	480	13.7%	437	11.5%
35 - 44	576	18.7%	544	15.5%	510	13.4%
45 - 54	494	16.1%	612	17.5%	666	17.5%
55 - 64	399	13.0%	417	11.9%	494	13.0%
65 - 74	259	8.4%	254	7.3%	282	7.4%
75 - 84	102	3.3%	114	3.3%	160	4.2%
85+	26	0.8%	27	0.8%	44	1.2%

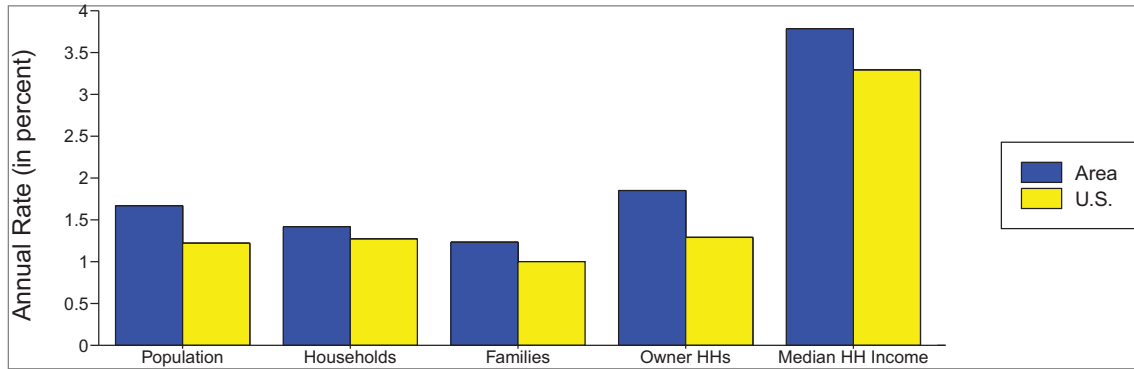
Race and Ethnicity	2000		2007		2012	
	Number	Percent	Number	Percent	Number	Percent
White Alone	2,906	94.5%	3,119	89.0%	3,302	86.8%
Black Alone	24	0.8%	69	2.0%	85	2.2%
American Indian Alone	14	0.5%	24	0.7%	28	0.7%
Asian Alone	43	1.4%	94	2.7%	124	3.3%
Pacific Islander Alone	2	0.1%	5	0.1%	6	0.2%
Some Other Race Alone	42	1.4%	103	2.9%	144	3.8%
Two or More Races	44	1.4%	89	2.5%	116	3.0%
Hispanic Origin (Any Race)	155	5.0%	439	12.5%	607	16.0%

Data Note: Income is expressed in current dollars.

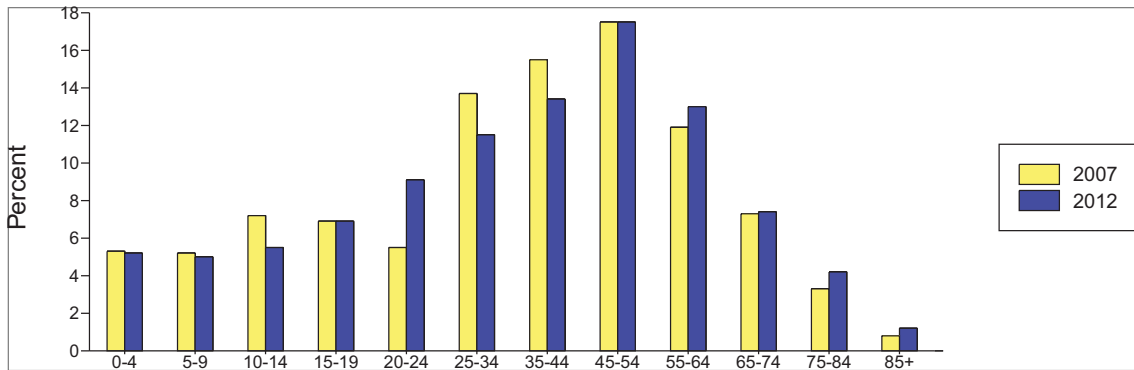
Source: U.S. Bureau of the Census, 2000 Census of Population and Housing. ESRI forecasts for 2007 and 2012.

Places: El Lago city, TX

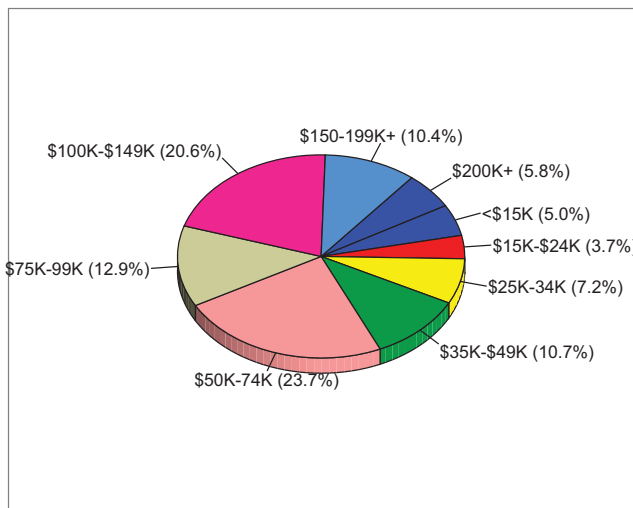
Trends 2007-2012



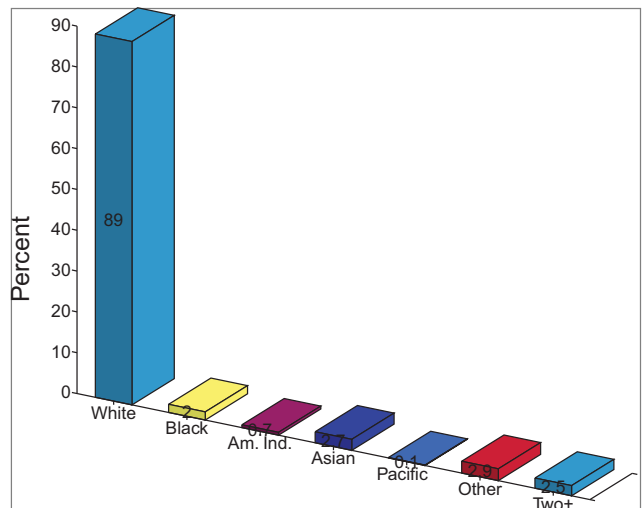
Population by Age



2007 Household Income



2007 Population by Race



2007 Percent Hispanic Origin: 12.5%